

Class: VIII
Date: 11/01/'25

Duration: 1Hr
Max. Marks: 25

General Instructions:

- i. This question paper consists of 12 questions in 3 sections.
- ii. Section A consists of 3 objective type questions carrying 1 mark each.
- iii. Section B consists of 5 Very Short questions carrying 02 marks each.
- iv. Section C consists of 4 Short Answer type questions carrying 03 marks each.

SECTION-A

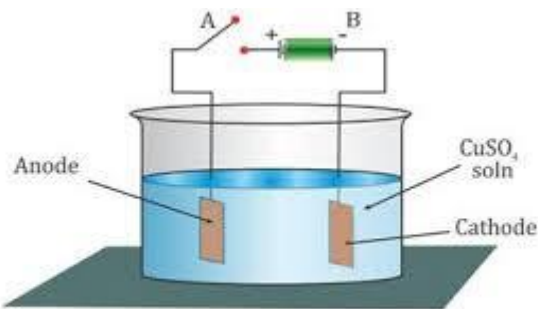
Select and write the most appropriate option out of the four options given for each of the questions 1 - 3.

1. (d) Oil 1
2. (a) 25 cm 1
3. (a) Both assertion and reason are true, and reason is the correct explanation of assertion. 1

SECTION B

Question No. 4 to 8 are very short answer questions

4.



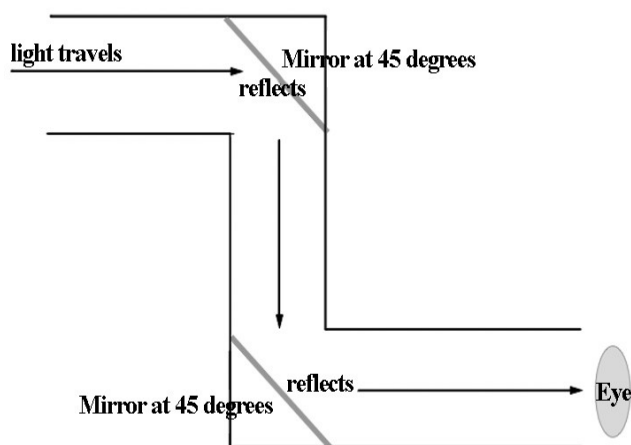
Electrolysis of Copper sulphate Solution

2

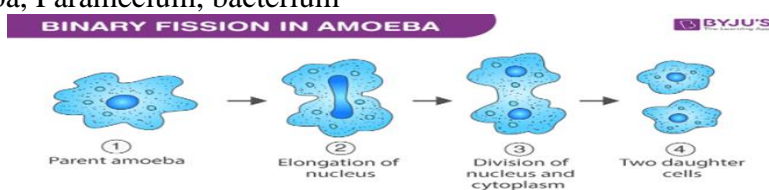
5. (a) Hydrogen and Oxygen
(b) Anode and Cathode $\frac{1}{2} + \frac{1}{2} + \frac{1}{2} + \frac{1}{2} = 2$

6. The number of images formed if the angle between two mirrors is : 2
(a) $n = 360/\text{angle} - 1$, 3 images
(b) 5 images

A simple periscope uses two mirrors inclined at an angle of 45 degrees as shown in the figure. When light falls on one mirror, it is reflected back and falls on the other mirror and gets reflected to the observer's eyes. It helps to view over, around or through an object.



8..Binary Fission• Most common method in unicellular organisms.
It is division of the parent cell into two identical daughter cells.
Amoeba, Paramecium, bacterium



1+1

SECTION C

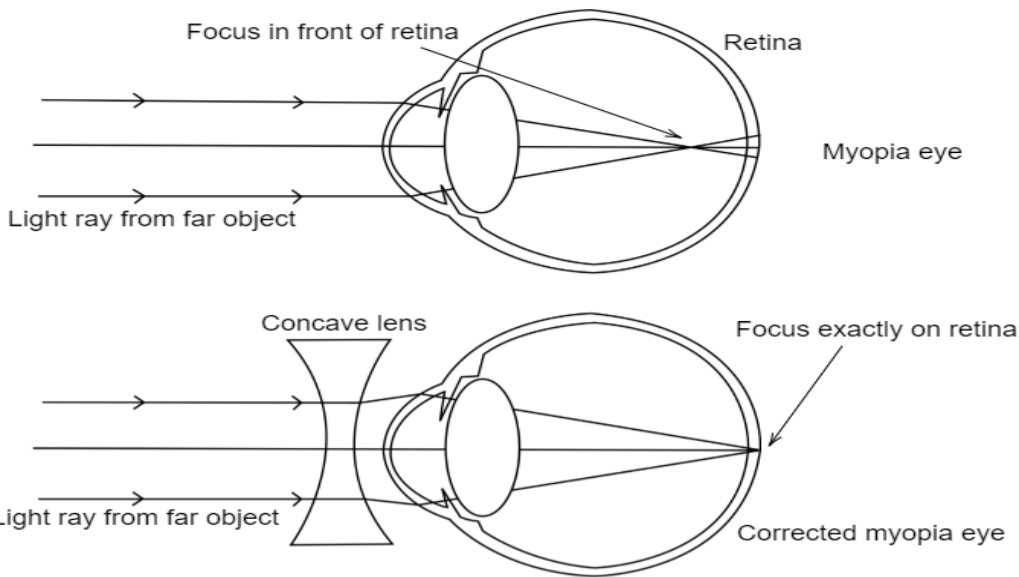
Question No. 9 to 12 are short answer questions

9. (a) Protons , Neutrons and Electrons 1

(b) Electroplating is the process of coating a metal with a thin layer of another metal by electrolysis to improve the metal's corrosion resistance

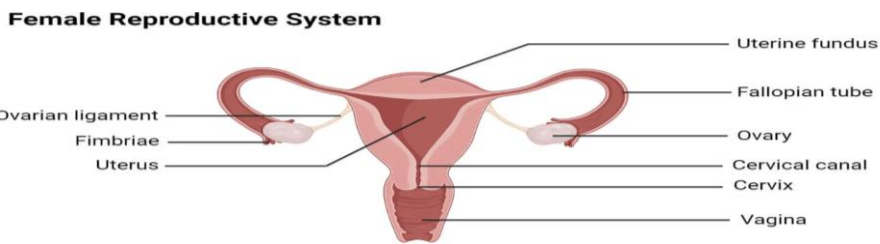
Corrosion resistance: a corrosion-prone substance such as iron can be coated with a layer of non-corrosive material, thereby protecting the original material. Decorative items: shine and luster can be imparted to otherwise dull surfaces

Myopia, also known as nearsightedness, is a common eye defect that makes it difficult to see objects that are far away. It occurs when the eyeball is too long relative to the focusing power of the eye's lens and cornea. correction : Concave lens



11. a.

1+1



b. Fertilization is defined as the fusion of male gamete (sperm) with female gamete (egg) to form a zygote.

1.

Answer the following:

a. By Budding: hydra produces a small projection called bud. Later it gets cut and grows into new hydra. 1



b. Oviparous and viviparous animals.

1

Oviparous	viviparous
Animals which lay fertilized egg, which hatches into chicks	Animals give birth to young ones.
Examples: Reptiles, birds	Examples : All mammals, humans.

c. Egg

and Sperm.

1

Egg	Sperm
It is a female germ cell. non motile	It is a male germ cell.actively motile
Sex chromosome present in egg is X.	Sex chromosomes present in sperm are both X and Y.
Larger in size	Small sized.

*****Best of luck*****